

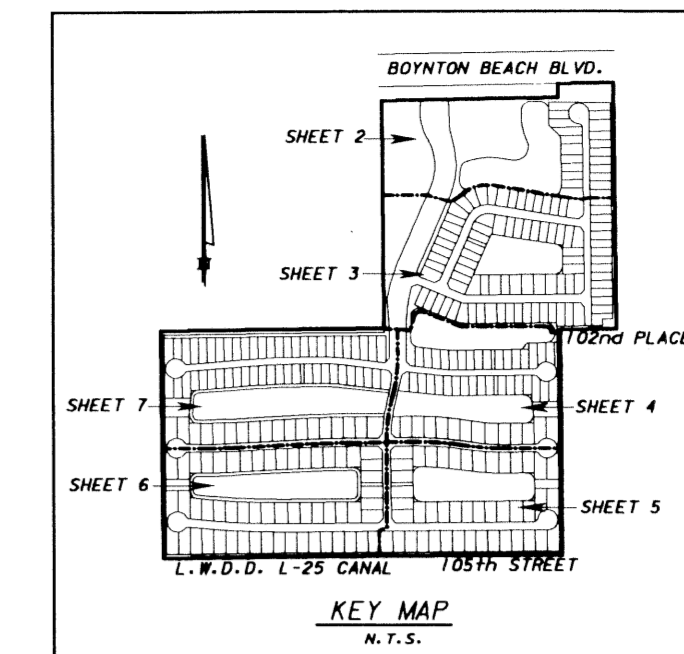
LEGEND:

- - PERMANENT REFERENCE MONUMENT, LB-6837
- - PERMANENT CONTROL POINT
- B.E. - BUFFER EASEMENT
- ⊕ - CENTERLINE
- C.H. - CHORD
- C.B. - CHORD BEARING
- D.B. - DEED BOOK
- D.E. - DRAINAGE EASEMENT
- L - ARC LENGTH
- L.A.E. - LIMITED ACCESS EASEMENT
- L.M.A.E. - LAKE MAINTENANCE ACCESS EASEMENT
- L.M.E. - LAKE MAINTENANCE EASEMENT
- L.W.D.D. - LAKE WORTH DRAINAGE EASEMENT
- O.E. - OVERHANG EASEMENT
- N.R. - NOT RADIAL
- R - RADIUS
- N.T.S. - NOT TO SCALE
- O.R.B. - OFFICIAL RECORD BOOK
- P.B. - PLAT BOOK
- P.B.F. - PALM BEACH FARMS COMPANY PLAT NO. 3
- PGS - PAGES
- P.S.M. - PROFESSIONAL SURVEYOR AND MAPPER
- R/W - RIGHT OF WAY
- U.E. - UTILITY EASEMENT
- P.B.C.U.E. - PALM BEACH COUNTY UTILITIES EASEMENT

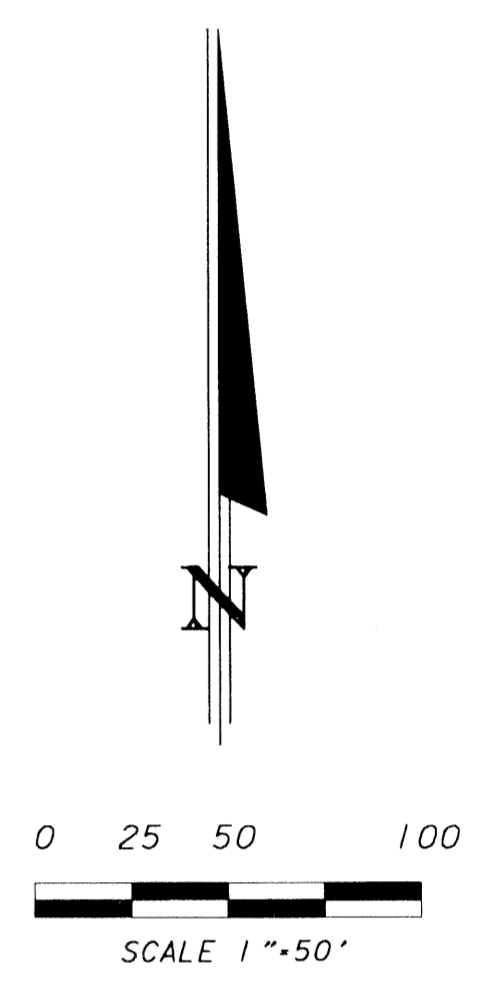
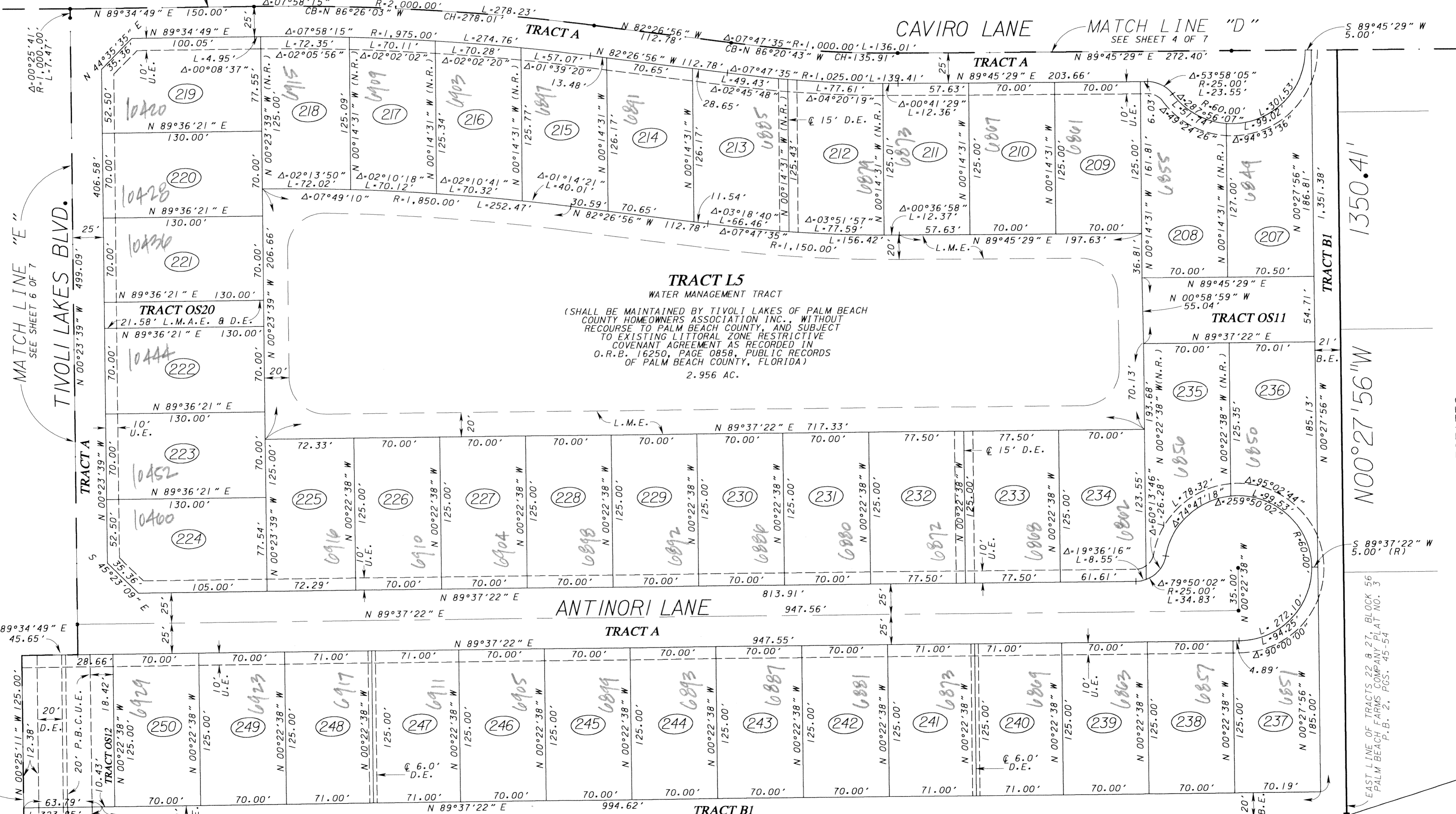
TIVOLI LAKES P.U.D.

BEING A REPLAT OF TRACTS 33 THROUGH 36, 61 THROUGH 64, BLOCK 55, AND TRACTS 5, 9 THROUGH 12, 22 THROUGH 27, BLOCK 56, AND A PORTION OF TRACTS 6, 7 AND 8, BLOCK 56, AND A PORTION OF THOSE 30 FOOT AND 50 FOOT PLATTED ROAD RIGHTS OF WAY BEING COINCIDENT WITH AFOREMENTIONED TRACTS, LYING AND BEING IN PALM BEACH FARMS COMPANY PLAT NO. 3 ACCORDING TO THE PLAT THEREOF RECORDED IN PLAT BOOK 2, PAGES 45 THROUGH 54, AND A PORTION OF TRACT "C", MIZNER FALLS, ACCORDING TO THE PLAT THEREOF, AS RECORDED IN PLAT BOOK 91, PAGES 7 THROUGH 14, PUBLIC RECORDS OF PALM BEACH COUNTY FLORIDA. SECTIONS 27 AND 28, TOWNSHIP 45 SOUTH, RANGE 42 EAST, PALM BEACH COUNTY, FLORIDA.

SHEET 5 OF 7, APRIL, 2004



MATCH LINE "D"
SEE SHEET 4 OF 7



N89°34'49"E
1343.85'

N 795682.3162
E 932232.2011

COORDINATES SHOWN ARE GRID COORDINATES DATUM - NAD 83 (1990 ADJUSTMENT) ZONE - FLORIDA EAST ZONE LINEAR UNIT - U.S. SURVEY FEET COORDINATE SYSTEM - 1983 STATE PLANE TRANSVERSE MERCATOR PROJECTION ALL DISTANCES ARE GROUND SCALE FACTOR - 1.0000296 PLAT BEARING - N00°24'29"W GRID BEARING - N00°25'18"W BEARING ROTATION (PLAT TO GRID) 00°00'49" COUNTER CLOCKWISE

SEXTON ENGINEERING ASSOCIATES, INC.
CONSULTING ENGINEERS AND SURVEYORS
12300 SOUTH SHORE BLVD., SUITE 200
WELLINGTON, FLORIDA, 33414
PHONE: 561-792-3122, FAX: 561-792-3168
FL REGISTRATIONS: LB0006637, EB 0007864

TIVOLI LAKES
P.U.D.
P.B. 2, PGS. 45-54
SHEET 5 OF 7
APRIL 2004